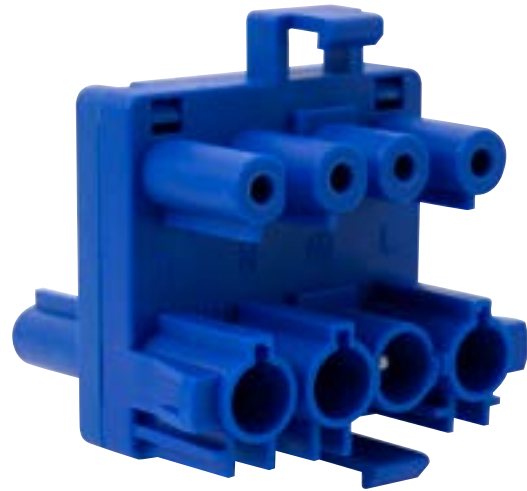


Product Code: CT355

Description: 250V~ 20A 4 Pole 1 In 2 Compact Splitter



General Information

Dimensions (mm)	52 (W) x 47 (D) x 40 (H)	
Finish	Blue	
Materials	Housing: Nylon	Terminals: Silver Plated Brass
Rated Voltage (V~) (Ue)	250	Frequency (Hz) 50
Resistive Load Rating (A)	20	
Rated Impulse Voltage (kV)	4	
Ingress Protection	IP20	
Operational Temperature (°C)	-5 to +40	
Warranty (Years)	10	
Standards	BS 8488 BS EN 61535 BS 5733	

Additional Information For cleaning / polishing of products, use only a soft, dry, clean cloth. Ensure that the mains supply is isolated before commencing installation.

Pre-fabricating wiring systems manufactured to BS 8488 by other manufacturers may not be compatible or safely inter-connectable with this system. Any dangerous compatibility between different manufactures installation coupler systems is not automatically prevented by compliance with IEC 61535.

Compatible Connectors Input Connector: Compatible With 3 and 4 Pole Connectors (Complete or Female)
Output Connectors: Compatible with 3 and 4 Pole Male Connectors

