



INSTALLATION & MAINTENANCE MANUAL

OH20MB

GENERAL INSTRUCTIONS

These instructions should be read carefully and retained after installation by the end user for future reference and maintenance.

**These instructions should be used to aid installation of the following product:
OH20MB**

SAFETY

- This product must be connected to a socket outlet which is suitable for the power rating of this appliance. If in any doubt, please consult a qualified electrician
- Never install the unit where it could be subject to:
 - Storage of inflammable or explosive products
 - Flammable atmosphere, such as flammable sprays or gas
 - Rooms that could have excessive moisture, such as bathrooms
- This unit should only be installed at minimum 1.8m in height and in a place that it cannot be touched by hand as the unit becomes hot while in use
- Do not insert any foreign objects or body parts through the protective grille while in use or when the product is still hot
- Do not stare at the light for long periods of time
- Do not place any items of clothing, towels, or any fabric material over the product to dry

- Any adjustment to the bracket must be done after the product has been turned off and plenty of time has been allowed for it to cool
- Please note the IP (Ingress Protection) rating of this product when deciding the location for installation
- This product is for indoor or outdoor covered areas only
- This product is Class I and must be earthed
- This product is IP20 rated

INSTALLATION

Note – Please note that this product is not designed to be used by persons (including children) with reduced physical, sensory, or mental capabilities, or lack of experience and knowledge, unless they have been given supervision or instruction

Note – This product is designed for wall installation only, horizontally at a minimum height of 1.8m and it must have a minimum of 0.25m air gap from the ceiling and away from the walls and other structures (see Fig. 1)

- Provide power to the required point of installation (a 13A socket is required per unit)
- Using the bracket as a template, mark the location for, and drill the fixing holes ensuring not to infringe with any gas/water pipes or electrical cables. Fix the bracket to the wall using the screws provided (see Fig.1)
- Fix the body of the heater to the bracket and insert the cable into the cable clip (see Fig.1)

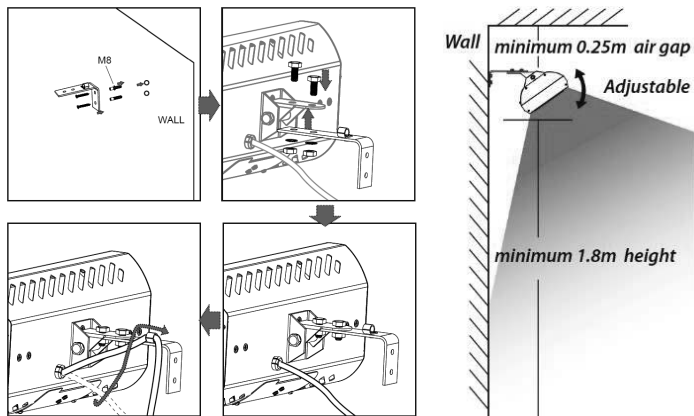


Fig. 1

WARNING

This product must be disconnected from the circuit if subjected to any high voltage or insulation resistance testing. Irreparable damage will occur if this instruction is not followed.

GENERAL

Clean with a soft dry cloth only, do not use aggressive cleaning products or solvents which may damage the product.

This product should be recycled in the correct manner when it reaches the end of its life. Check local authorities for where facilities exist.

WARRANTY

This product has a warranty of 2 years from date of purchase. Failure to install this product in accordance with the current edition of the IEE Wiring Regulations (BS7671), improper use, or removal of the batch code will invalidate the warranty. If this product should fail within its warranty period, it should be returned to the place of purchase for a free of charge replacement. ML Accessories does not accept responsibility for any installation costs associated with the replacement product. Your statutory rights are not affected. ML Accessories reserve the right to alter product specification without prior notice.

Supplied By:

(UK) Manufacturer

ML Accessories Ltd, Unit E Chiltern Park, Boscombe Road,
Dunstable LU5 4LT, www.mlaccessories.co.uk

(EU) Authorised Representative

nnuks Holding GmbH, Niederkasseler Lohweg 18, 40547
Düsseldorf, Germany, www.nnuks.com

Email: eprel@nnuks.com

**230V
50Hz**

IP20



ML
ACCESSORIES LTD



**UK
CA CE**



11

AVFEB22_V1